



An Equitable Pathway to Net Zero

Considerations when pursuing decarbonization policy & program design.

December 9, 2020

Eugenia Gibbons

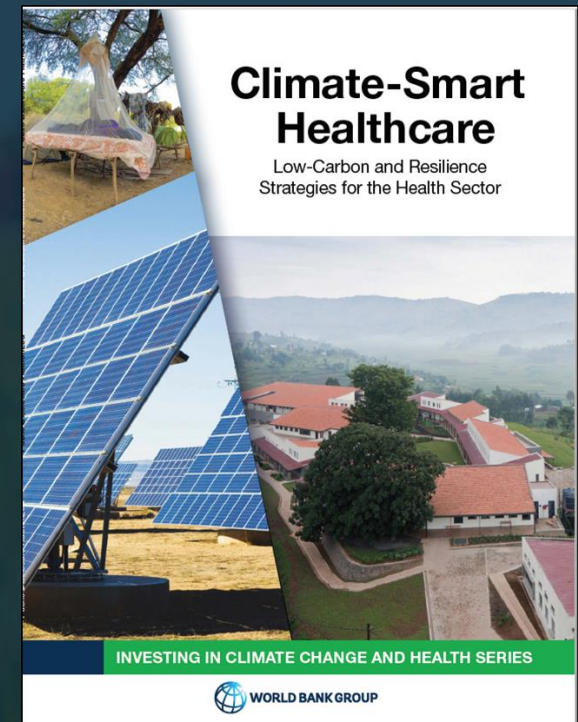
Boston Director of Climate Policy, Health Care Without Harm

1996

Health Care Without Harm works to transform health care worldwide so that it reduces its environmental footprint, becomes a community anchor for sustainability and becomes a leader in the global movement for environmental health and justice.

36,000

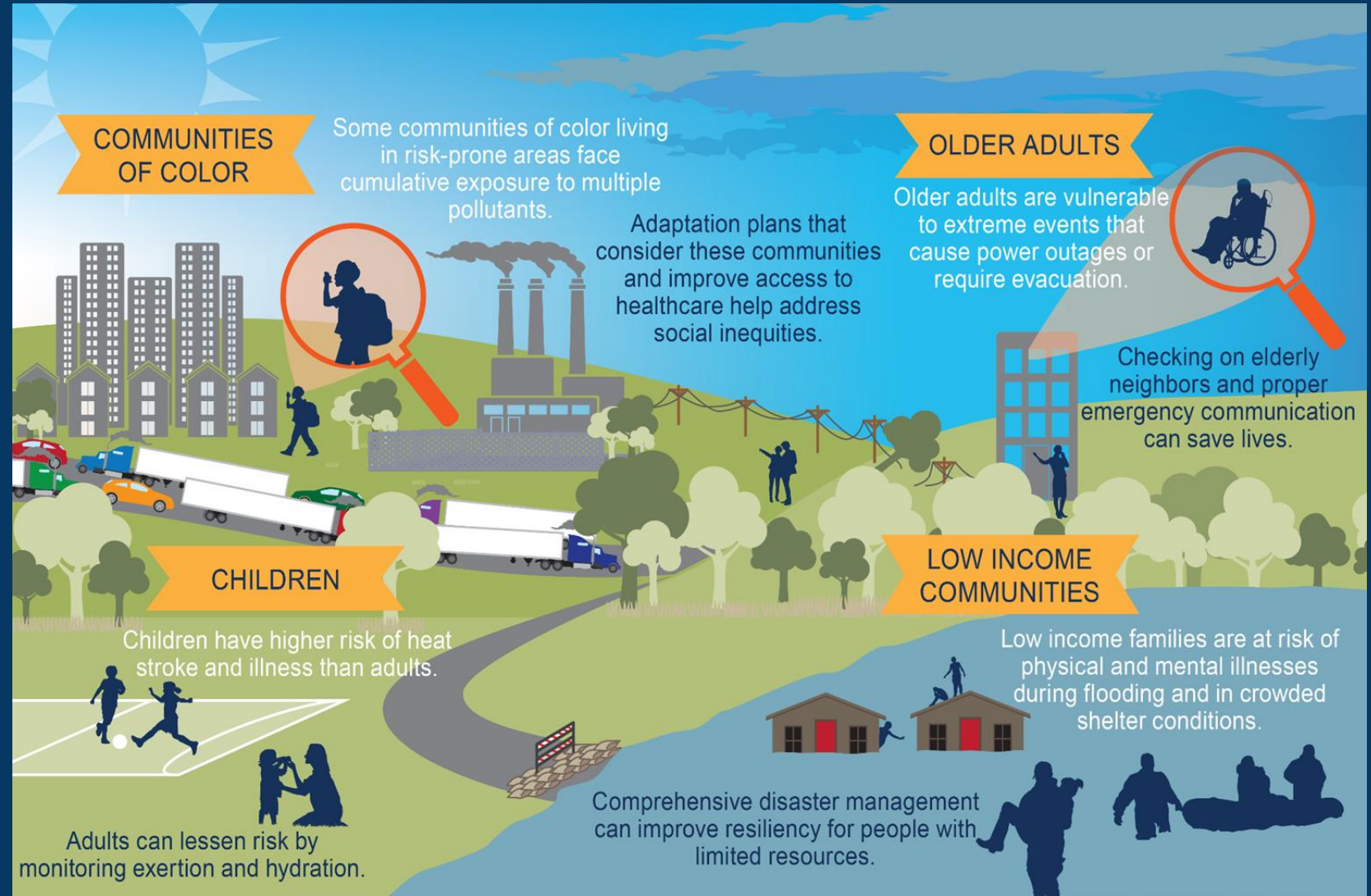
Our reach includes 36,000 hospitals and health centers in 60 countries worldwide.



Why hospitals?

"... Our racial inequality crisis is intertwined with our climate crisis. If we don't work on both, we will succeed at neither."

- Ayana Elizabeth Johnson





Framing Policy & Program Design: An Equitable & Just Pathway to Net Zero

GWSA IAC Climate Justice Working Group

Equity must be a factor in evaluating the GWSA policy, the Roadmap to 2050, and the 2030 CECP.

GOAL: To make sure that Massachusetts is on target for achieving the 2030 and 2050 greenhouse gas emission reductions while ensuring targeted benefits to environmental justice populations and other historically marginalized communities.

-- [*CJWG Recommendations for 80 x 50 Study Scenario Planning*](#) (Feb.24, 2020)

Climate justice will only be achieved if EEA enacts policies that bring about concrete improvements in the health and lives of communities in the Commonwealth that continue to be disproportionately impacted by pollution and experience the worst impacts of climate change and COVID-19.

-- [*CJWG Preliminary Recommendations to Improve the Master Policy List to Address Climate Justice*](#) (Aug. 7, 2020)

An Equitable & Just Pathway to Net Zero Emissions

GUIDING PRINCIPLES from the [*GWSA IAC Guiding Principles, Cross Cutting Policy Priorities, and Sector Specific Policy Priorities for the Clean Energy and Climate Plan for 2030*](#)

PRIORITIZE & ANCHOR EQUITY & JUSTICE	UTILIZE BEST AVAILABLE SCIENCE, TECHNOLOGY, AND DATA
SUPPORT PEOPLE-CENTERED APPROACH TO POLICY MAKING, PROGRAM DESIGN, AND IMPLEMENTATION	SUPPORT PARTNERSHIP AND COLLABORATION IN EVERY WAY POSSIBLE AT SCALE FOR IMPACT
TAKE HOLISTIC APPROACH TO ACHIEVING CLIMATE GOALS/NET ZERO BY 2050/GWSA COMPLIANCE	ENSURE CONSISTENT AND SUPPORTIVE APPROACHES ACROSS CLIMATE CHANGE POLICIES AND STRATEGIES

An Equitable & Just Pathway to Net Zero Emissions

Climate Justice Working Group Policy Priorities from the [*GWSA IAC Guiding Principles, Cross Cutting Policy Priorities, and Sector Specific Policy Priorities for the Clean Energy and Climate Plan for 2030*](#)

Set annual air pollution reduction targets for pollution hotspots.	Prioritize climate investments in EJ populations
Require diverse hiring and workforce development practices across all sectors to achieve quality jobs.	Redress harm of long-standing environmental, energy, and development policies that have burdened EJ populations and other vulnerable residents.
Ensure that community engagement influences state decision-making.	The burdens of existing and future energy infrastructure must be reduced for nearby residents and workers. Additionally, ensure that increased clean energy investments do not increase the energy burden in LMI and EJ communities.



THANK YOU

EUGENIA GIBBONS

Boston Director of Climate Policy

Health Care Without Harm | Practice Greenhealth

EGIBBONS@HCWH.ORG