

# Green Mountain Transit



VECAN Conference - Transportation Workshop

Jenn Wood - Public Affairs & Community Relations Manager

December 7, 2020



# Agenda

- ▶ GMT Overview
- ▶ Funding & Select Board Engagement
- ▶ MyRide by GMT - Montpelier Pilot
- ▶ The Future of Rural Transit
- ▶ Fare Free
- ▶ Energy Committee & Transportation - Northfield Insights
- ▶ Transportation Toolkit for Towns - Vital Communities



# GMT Funding Overview

Green Mountain Transit (GMT) is a municipality and is the first and only transit authority in the State of Vermont, serving Chittenden, Franklin, Grand Isle, Lamoille, and Washington Counties, the towns of Washington, Williamsfown and Orange of Orange County, with connecting services to Caledonia County. GMT is currently governed by a 13-member Board of Commissioners.

**GMT operates 50 routes serving communities across 5 counties in Northwest Vermont.**

In Chittenden County, GMT's urban district offers:

- Fixed routes
- Local commuter routes
- LNK Express routes
- ADA paratransit services
- Shuttles from senior housing complexes to local supermarkets
- Neighborhood specials for student transportation to Burlington schools

GMT ridership represents fifty percent (50%) of Vermont's public transit network – with the remaining provided by 7 other regional transit agencies spread across Vermont.

GMT is considered a municipality and is the first and only transit authority in the State of Vermont.

GMT services in Washington, Lamoille, Franklin, and Grand Isle Counties provide:

- Deviated fixed routes
- Commuter routes
- LNK Express Routes
- Demand response medical shuttles
- Service to-elder and persons with disabilities.

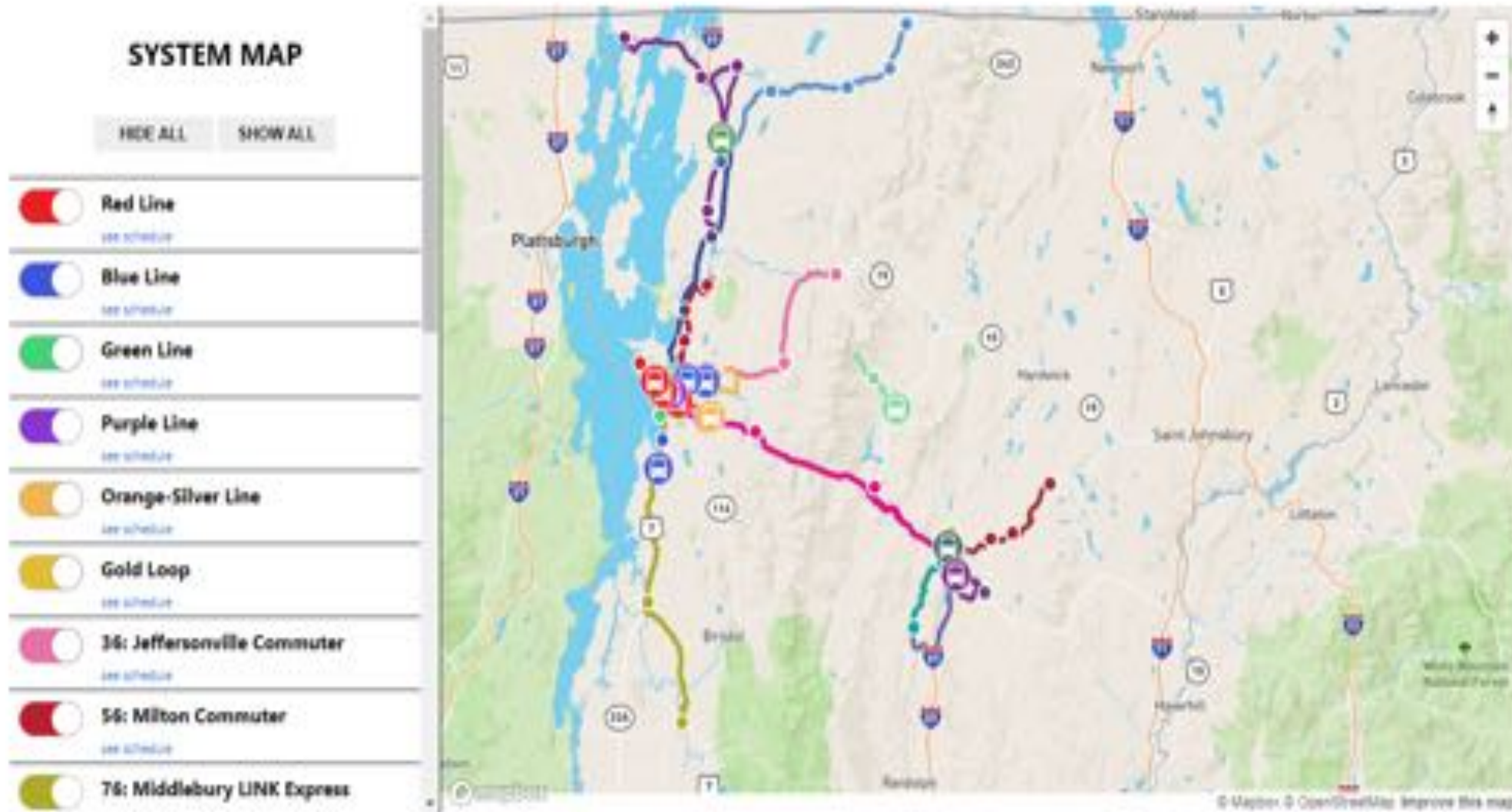


RideGMT.com | 802.844.2882  
101 Queen City Park Road  
Burlington, VT 05401



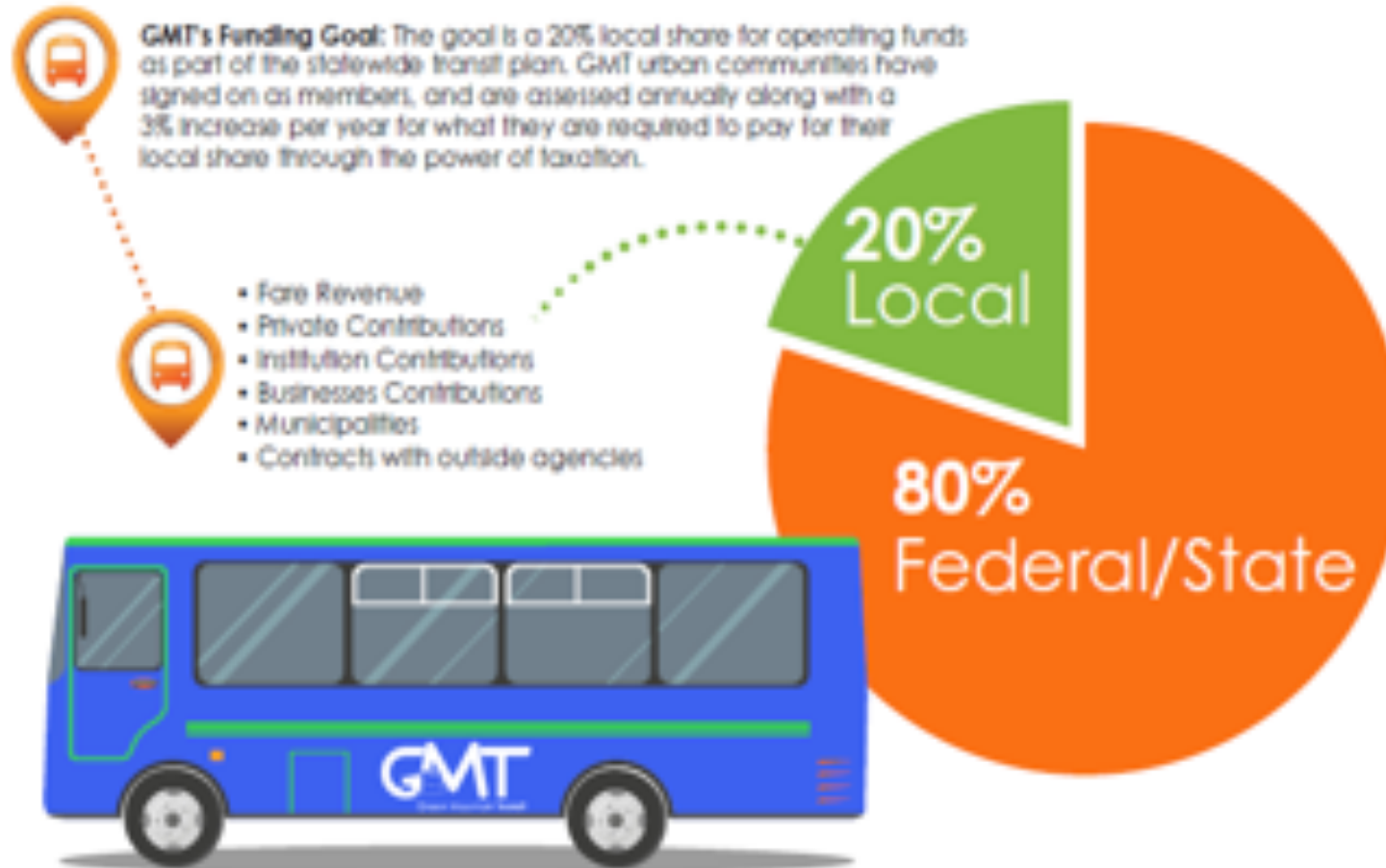
To learn more about GMT's funding structure, please click on the QR code.

# Welcome to Green Mountain Transit



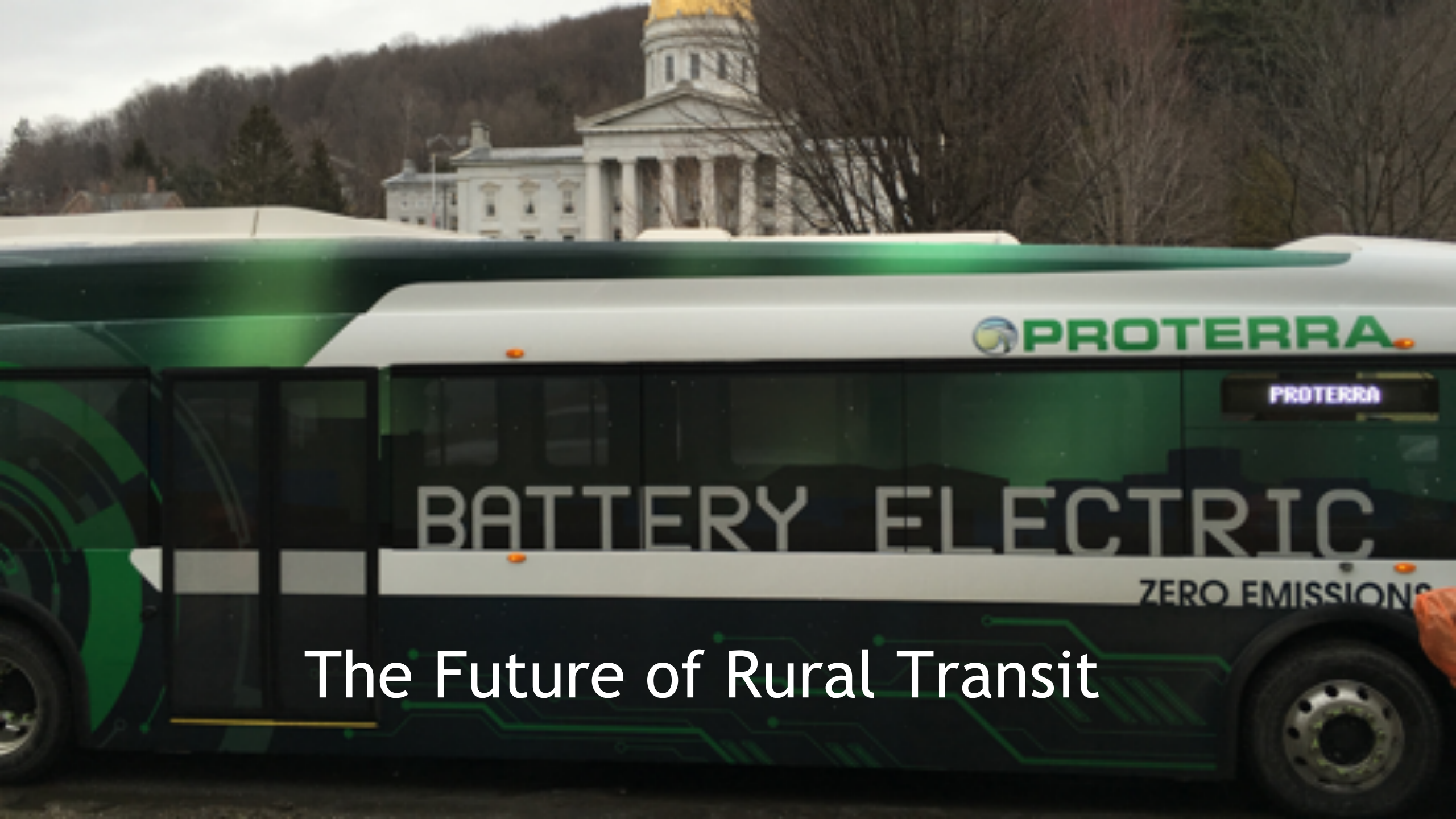


# Select Board Engagement



# Montpelier Pilot





# The Future of Rural Transit

# **STATEWIDE** **FARE-FREE TRANSIT**

**A CLIMATE SOLUTION THAT PRIORITIZES THE  
MOST MARGINALIZED VERMONTERS**

# **STVT**

**SUSTAINABLE  
TRANSPORTATION  
VERMONT**





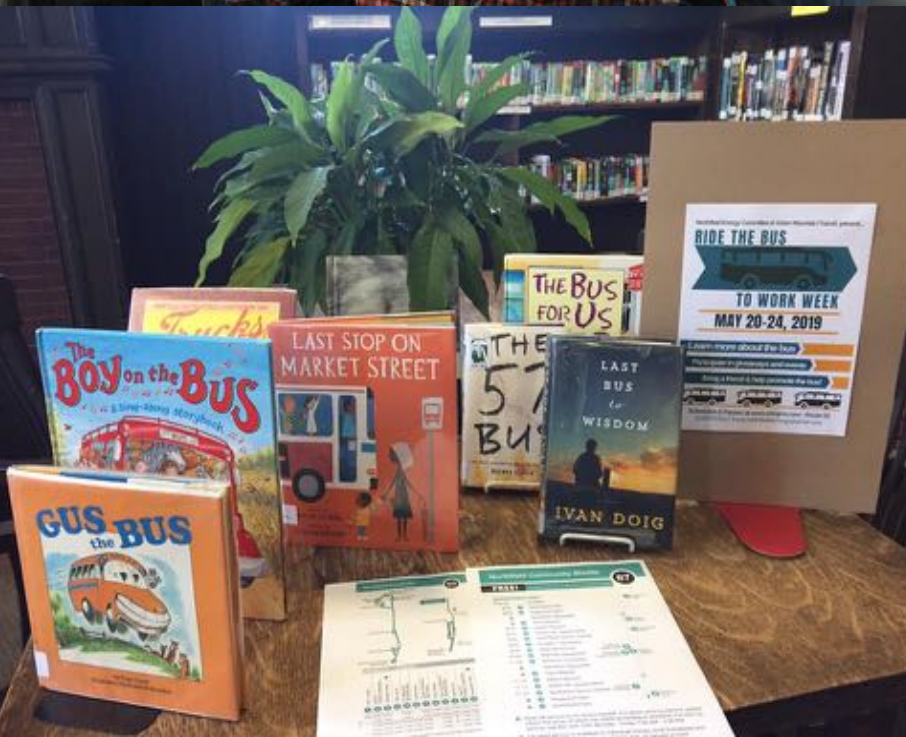
# Bus to Work



# NORTHFIELD



# Transportation Fair







## Transportation Toolkit for Town Volunteers

How community volunteers can tackle the climate impacts of our car-centered transportation system

In Vermont and New Hampshire, **transportation is the largest single source of greenhouse gases**. These emissions must be addressed on the national, regional, state, and local levels; this toolkit is for community volunteers who would like to **locally** tackle the climate impacts of our car-centered transportation system.

### Toolkit Overview

#### Introduction

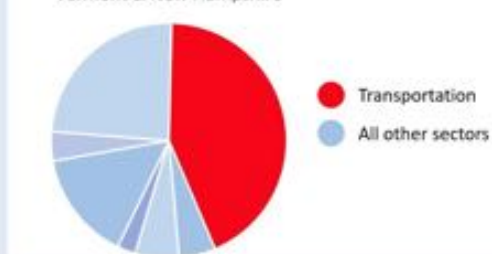
1. Why work on many modes of transportation?
2. The benefits of reducing total car travel
3. How we make change
4. The Five W's of community engagement

#### Projects List

1. Promote existing resources
2. Events and commuter challenges
3. Infrastructure
4. Build skills
5. Policy and advocacy
6. Increase community resources
7. Green your workplace

#### Resources

Greenhouse Gas Emissions by Sector,  
Vermont & New Hampshire



# Transportation Toolkit for Town Volunteers

- **NEW** online resource for energy committees!
- Two dozen+ projects that volunteers can take on to reduce transportation-related climate emissions.
- Includes local context and Vital Communities' experience and best practice on strategy and behavior change.
- Available at **[vitalcommunities.org/transportationtoolkit](https://vitalcommunities.org/transportationtoolkit)**

# Questions & Contact Info - Thank You!

- ▶ Jenn Wood, Public Affairs & Community Relations Manager
  - ▶ [jwood@ridegmt.com](mailto:jwood@ridegmt.com)

