

Community-Led Resilience Hubs

[Re]imagining Community Resilience Hubs in Rural Vermont:
Shifting power to communities via energy resilience

February 1, 2023 VECAN Winter Webinar Series
Sam Lash, Central Vermont Regional Planning Commission
Laura Cavin Bailey, Vermont Council on Rural Development
Vince O'Connell and Ned Houston, Craftsbury Energy Committee



Photo by Dan Mall on Unsplash

Poll 1 - Who's here today?

1. What town do you live in?
2. What town do you work in?
3. What sector do you work in?
4. How did you hear about this webinar?

Objectives:



- Provide compelling narrative to focus and help draw down unprecedented funding opportunities to municipalities and communities
 - Ensure investments now yield sustainable community-level results
- Continue (re)imagining/defining what resilience looks like in Vermont; adapting successful models for [more] rural communities (addressing rural resilience gaps)

Why Community-Led Resilience Hubs?



Adapting this model for our rural communities has the potential to:

- Sustain and nurture community connections and resilience
- **reduce energy burdens**, increase access to energy transition and its benefits (energy equity)
- **reduce fossil fuel use and GHG pollution** at aging community facilities, and set-up model to aggregate funding for replication across Vermont's rural communities
- expand green workforce development and provide local jobs,
- **complement existing emergency management**
 - targets gaps in outreach/communication with, and services for, frontline communities,
 - reliable clean power (mobile options too) for expanding activities/services (e.g. cooling and warming needs),
- **and more!**

TAKE
CARE
OF
EACH
OTHER



Defining Resilience Beyond Catastrophe

food

Community connections

transportation
& access

drinking water

shelter

waste

energy +
phone +
broadband
infrastructure

Rural Resilience Divide



**energy + broadband
infrastructure**

drinking water

**shelter from extreme
heat or cold**

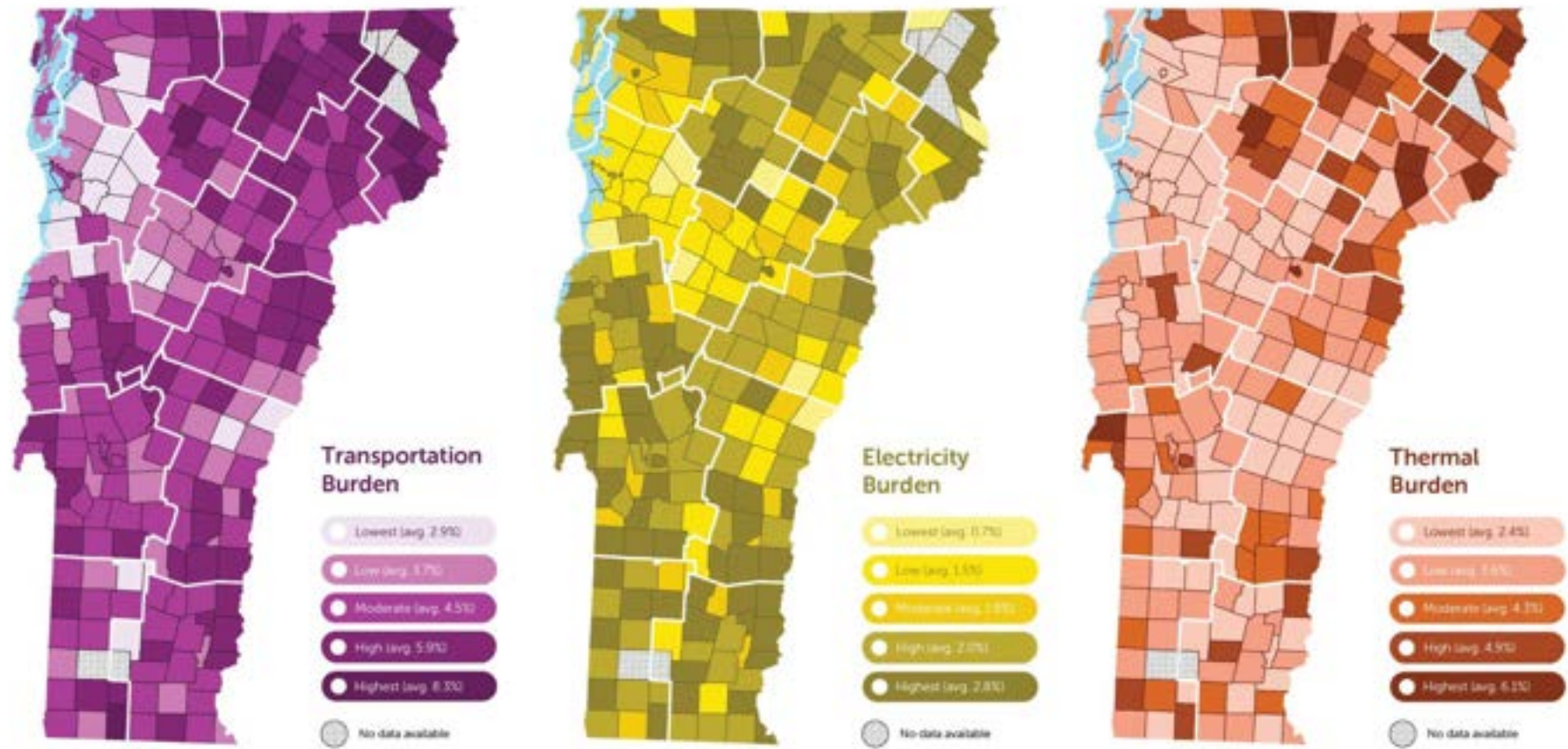
food

**transportation
& access**

**waste
infrastructure**

**social
services**

Energy Burden



Resilience Hubs





Resilient Structure

Strengthening the resilience of the facility to ensure that it meets operational goals in all conditions.



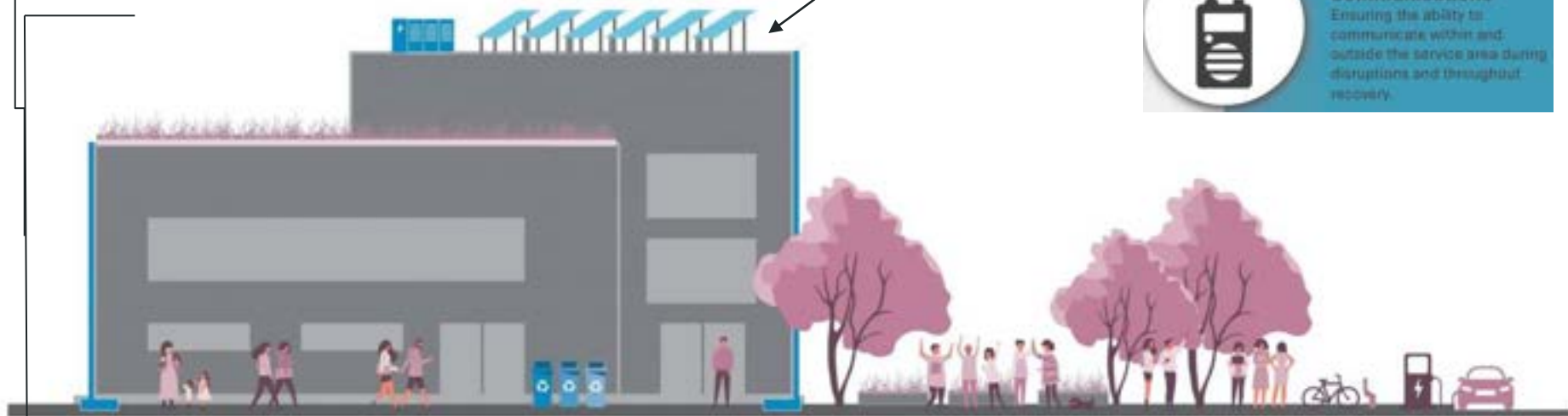
Resilient Power

Ensuring reliable backup power to the facility during a hazard while also improving the cost-effectiveness and sustainability of operations in all three operating modes.



Resilient Communications

Ensuring the ability to communicate within and outside the service area during disruptions and throughout recovery.



Resilient Programming and Services

Offering additional services and programs that build relationships, promote community preparedness, and improve residents' health and well-being.

Core Components



Resilient Operations

Ensuring personnel and processes are in place to operate the facility in all conditions.

Resilience Hubs: Serving Communities in 3 Modes

Examples	Everyday	Disruption/Emergencies	Recovery
Resilient Power	Solar Panels Heat Pumps EV Chargers	Battery-backup generator Mobile Generation & Storage	Battery-backup generator Mobile Generation & Storage
Resilient Structure & Landscape	Air Filtration Water Capture & Reuse Weatherization	Shelter Heating and Cooling Green and shade space Food generation	Placemaking
Resilient Programming & Services	Job Training & Recruitment Health Services Education Maker Space/ Incubator Meeting space/s Childcare	Community Meals Resource Distribution Volunteer Coordination	Sustainability of services
Resilient Communications	Translation Services/Info Wi-Fi/Computers Relationship building	CERT Training Radio Site Activation	Onsite and community connectivity
Resilient Operations	Accessibility Site Leadership Site Retrofits & Maintenance	Safety Security	Site Retrofits & Maintenance

Defining Criteria:

Base

- Strong community support and leadership
- Site is well-trusted
- Building/set of buildings
- Resilient Energy Systems
- Resilient Communications systems (internet)
- Base programming and service co-developed with community

Optimal

- Water capture and filtration onsite
- Air filtration
- Renewable Energy Generation and storage
- Community food resources
- Transportation hub
- Child/senior care

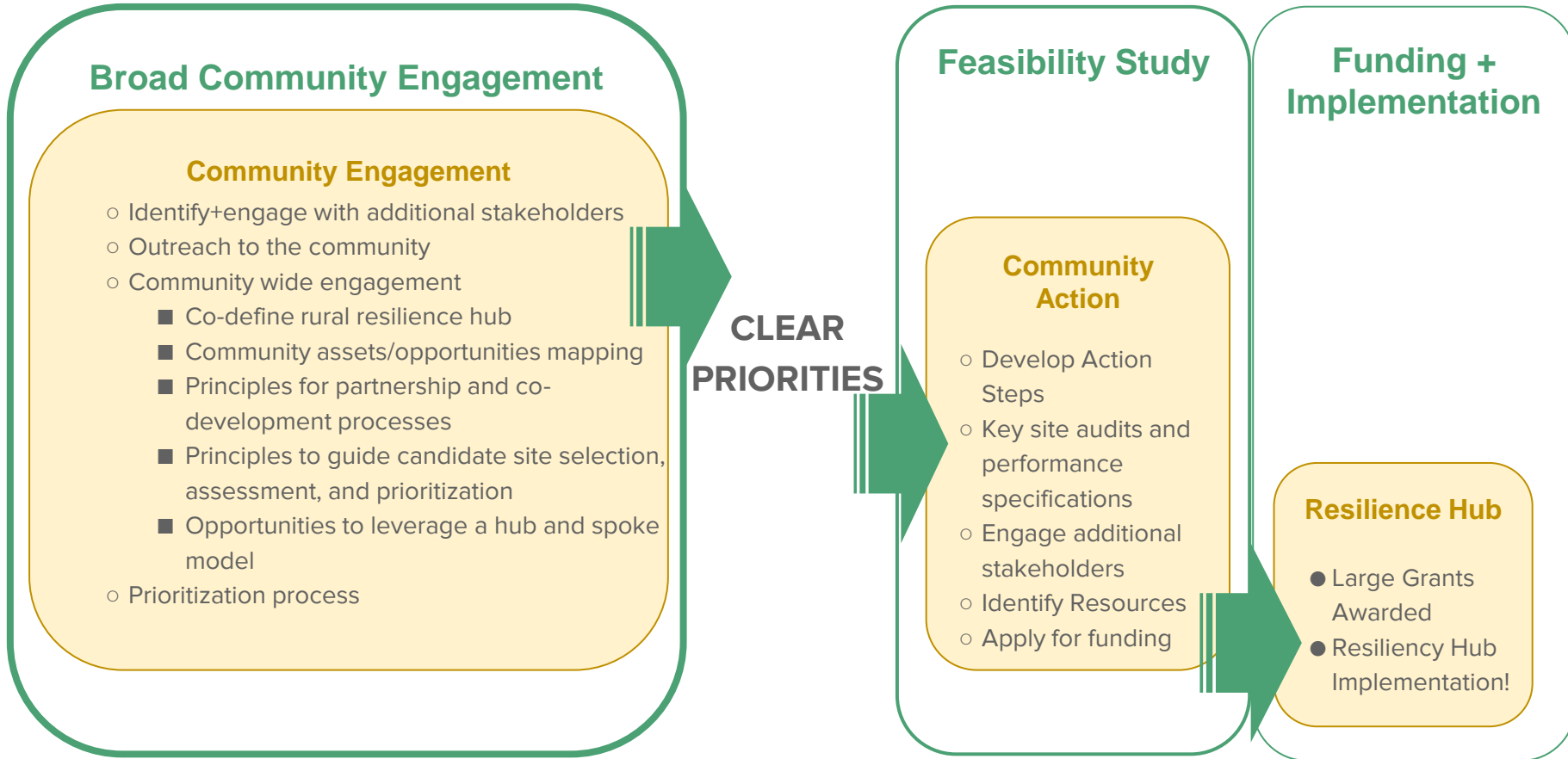
Ideal

- Greywater reuse onsite
- Biophilic design standards
- Net Zero Energy
- Community owned renewable energy benefits for surrounding community
- Coworking/Incubator spaces
- Workforce training
- Health clinics/resources

Meaningfully engage



Process



EACH PHASE: Refinement of iterative process and replication to other VT communities

How to Initiate the Process?

Municipal Scale

Coordinate Existing Projects & Priorities:

- Town staff and leadership identify key infrastructure projects and priorities already in pipeline
- Review listening sessions/asks, Community Assets Inventory/Assessments
- Town Plans (plural!)

Identify Existing “Hubs” & Entities

- Where and to whom do residents turn to?
 - Day-to-day
 - Social spaces
 - Service providers
 - Education
 - Emergencies
- Identify Existing gaps
 - Physical Infrastructure
 - Social Infrastructure

Community Scale

- Community Champion!
- Identify key partners
 - Town leadership
 - Community spaces
 - Service providers (social infrastructure, utilities, transportation)
- Initial convenings
- Broad Community Engagement

Additional Partners

Technical Assistance
Utilities
RPCs
VCRD
Neighboring towns

Return on Investments (Co-Benefits)

- 
- Community cohesion and wellbeing
 - Community energy cost savings
 - Reduce energy burden & GHGs
 - Increase energy efficiency
 - Increase reliability
 - Municipal cost savings
 - Social and energy equity
 - Greenspace and connectivity
 - Job training, green workforce development
 - Public health and safety
 - Emergency coordination
 - Mental health benefits
 - Resources and materials
 - Local economic stability
 - Internet access

Existing Approaches to Rural Resilience & Partners



Possible Partnerships:



BUILDING POWER TOGETHER.



(and others!)

[Re]Imagining Resilience Hubs in Vermont

Existing services + Basic Needs, nucleate services over time



Elmore Store, Elmore

Community Collaboration	+Transportation
Professional Kitchen- shared	+Resilient power
Post Office	+Flood resilience
Gathering Place	+Building Retrofits
Recreation	
Food Resources	
Fire Warden	

Old Schoolhouse Common, Marshfield

Municipal Building (Town Clerk)
Jacquith Public Library
Marshfield Historical Society
Onion River Foodshelf (7 towns; food storage capacity)
Internet
3 tracker solar system
Recreation paths, fields, etc
US RT2 Commuter (Rural Community Transportation)



[Re]Imagining Resilience Hubs in Vermont

Existing services + Basic Needs, nucleate services over time



building resilience, building community



The Corse Farm Dairy

Solar Array (farm and farmhouse 95%)

Apprenticeship Program

Vermont Land Trust

Environmental Stewardship (Interlace Commons)

School Programs (food and more)

+Transportation

+Gathering Place

+Comm Services

South Royalton/White River Valley

The Commons Community Resource Center, Resilience U,

Community Solar, Resilience Hub Working Group



St. Johnsbury Community Hub Project

Rabble Rousers: business, co-working,
gathering, free lunch, etc

Northfield Community Kiosk Camp Meade, Middlesex

Craftsbury Library Resilience Center

Poll 2 - Community Places

1. Where does your community gather now?

(multiple choice, choose all that apply)

Town store

Cafe/restaurant

Library

Town office

Grange

Town hall

Other municipal building

Performance/event space

School buildings

Town green/park

Weekly farmers market

Other community spaces

Poll 3 - Rural Resilience Hub

1. Rank the resources listed below for inclusion in a community resilience hub?

(multiple choice, choose all that apply)

Workforce development

Transportation options

Community space

Social services

Warming/cooling center

Backup energy storage

Connectivity wifi/phone/computers

Food resources

Incubator/coworking spaces

Childcare

Senior center

2. Rank what your town needs to get there?

(multiple choice, choose all that apply)

Collective community vision

Prioritization assistance

Technical assistance

Understanding existing resources available

Paid staff

Grant support

Community Volunteers

3. What key attributes make it a “RURAL” resilience hub?

Resources & Technical Assistance

VCRD [Leadership Guide](#)

VCRD - [Vermont Community Leadership Network](#) and past [workshop recordings](#)

[Community Resilience Organizations](#)

[Health Equity & Community Design Technical Assistance Pilot](#)→ [Better Places](#)

[Municipal Energy Resilience Grant Program](#)

Solar Workshop (find your Regional Planning Commission Energy Planner [here](#))

[Vermont League of Cities and Towns](#) (federal funding guides and assistance)

USDN [Resilience Hub Materials and Resources](#)

And more... contact laura@vtrural.org lash@cvregion.com

We hope you'll join us
[Re]imagining Community Resilience Hubs in Vermont

Thank you!